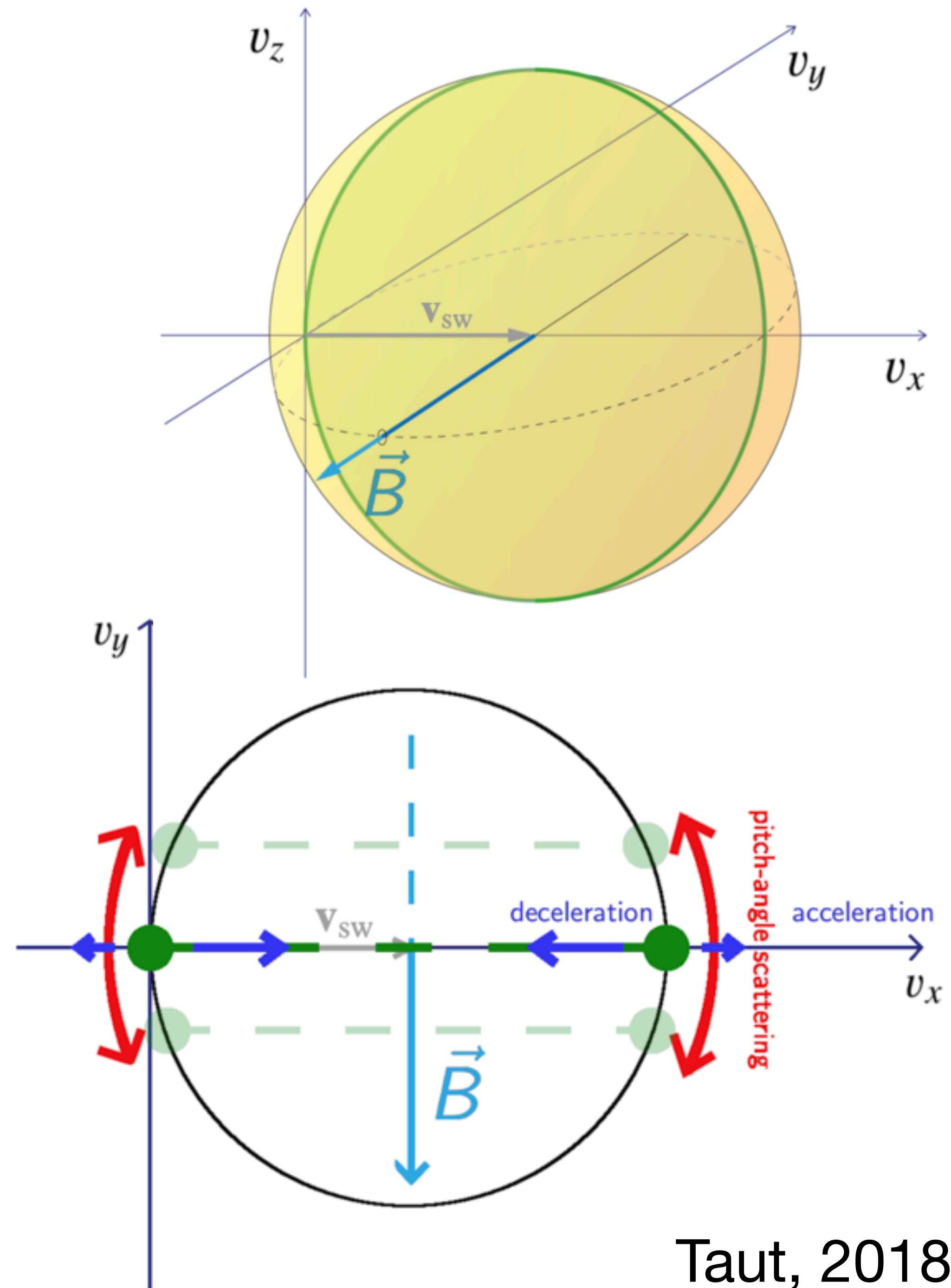
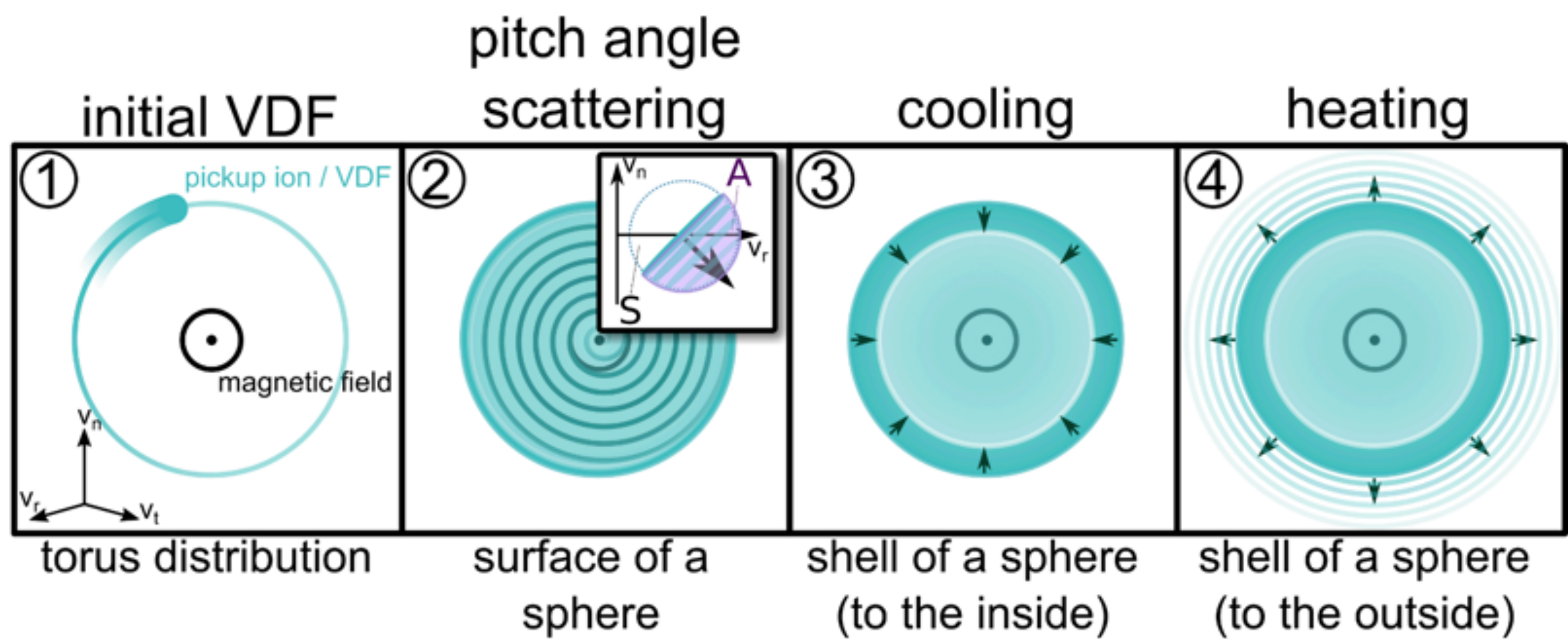
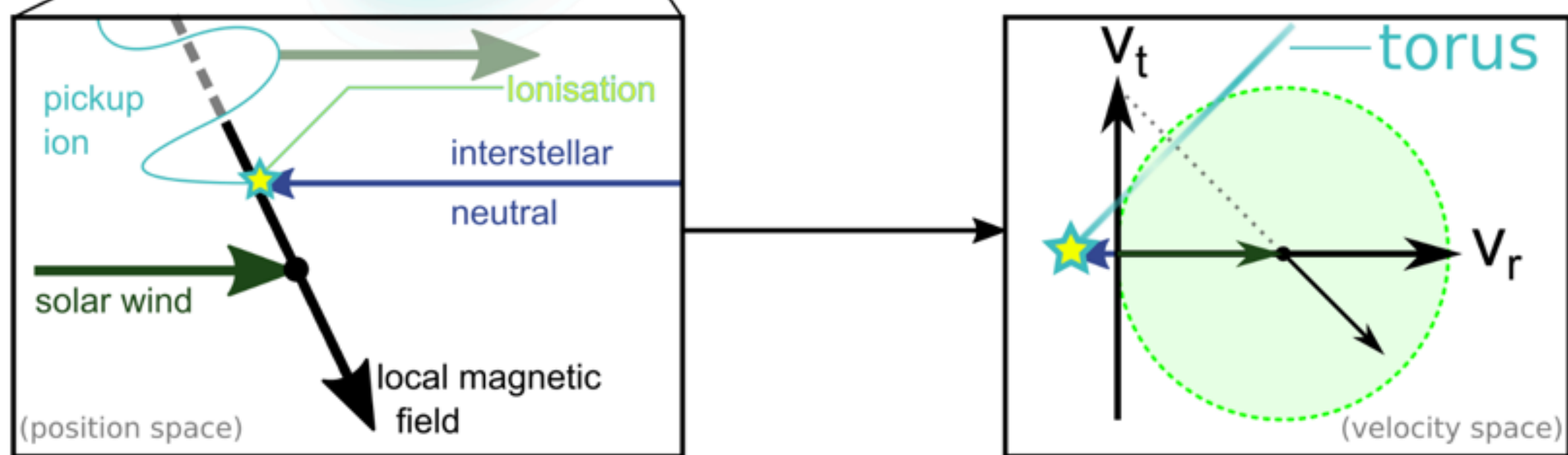
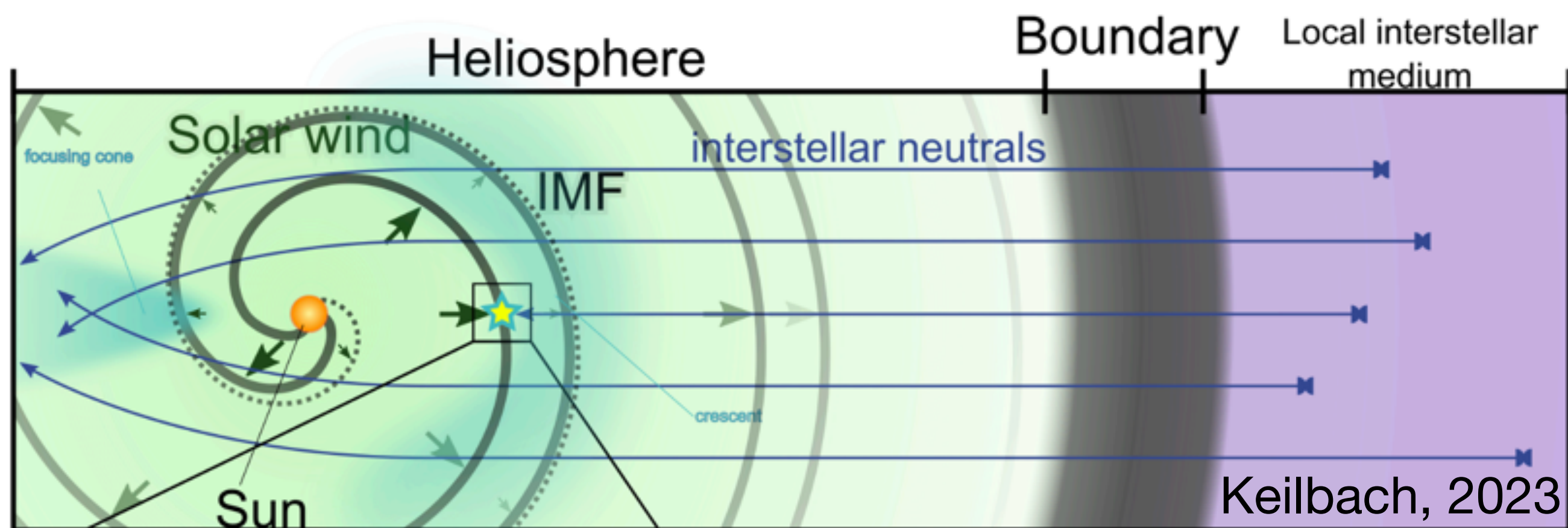


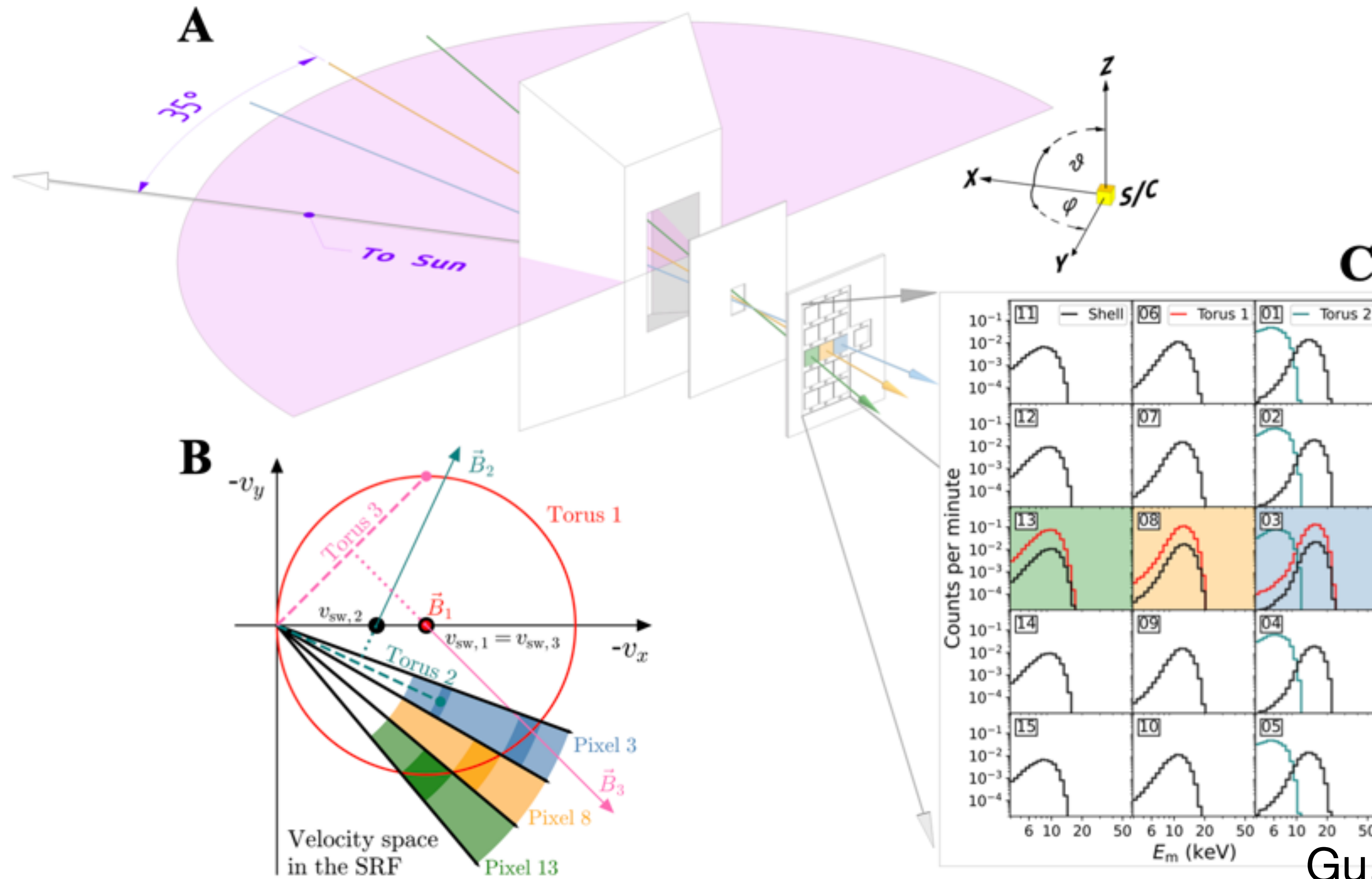
Pickup Ions as Test Particles for Wave-Particle Interactions

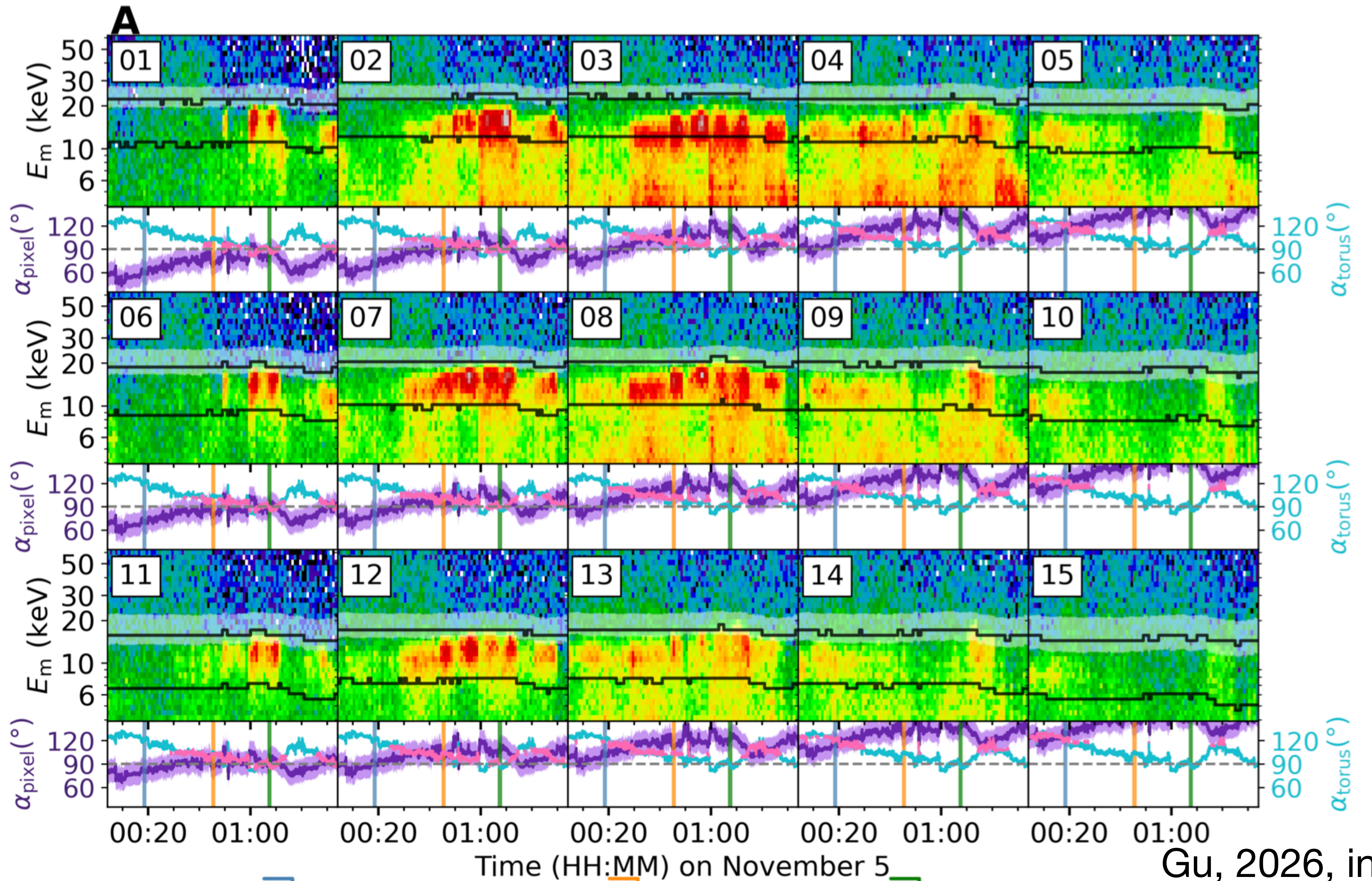
NORDITA week on turbulence and wave-particle interactions

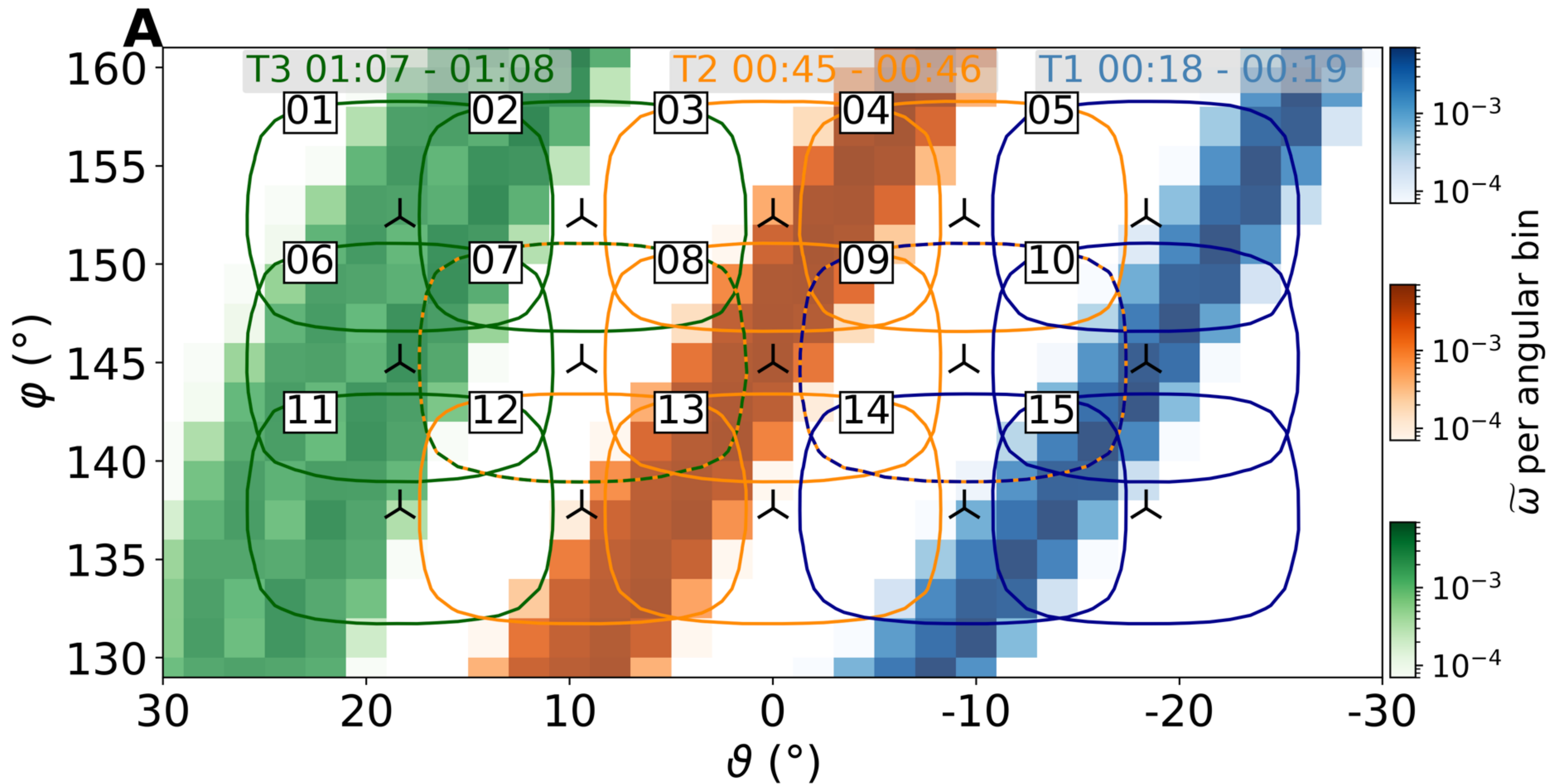
Chaoran Gu
University of Kiel

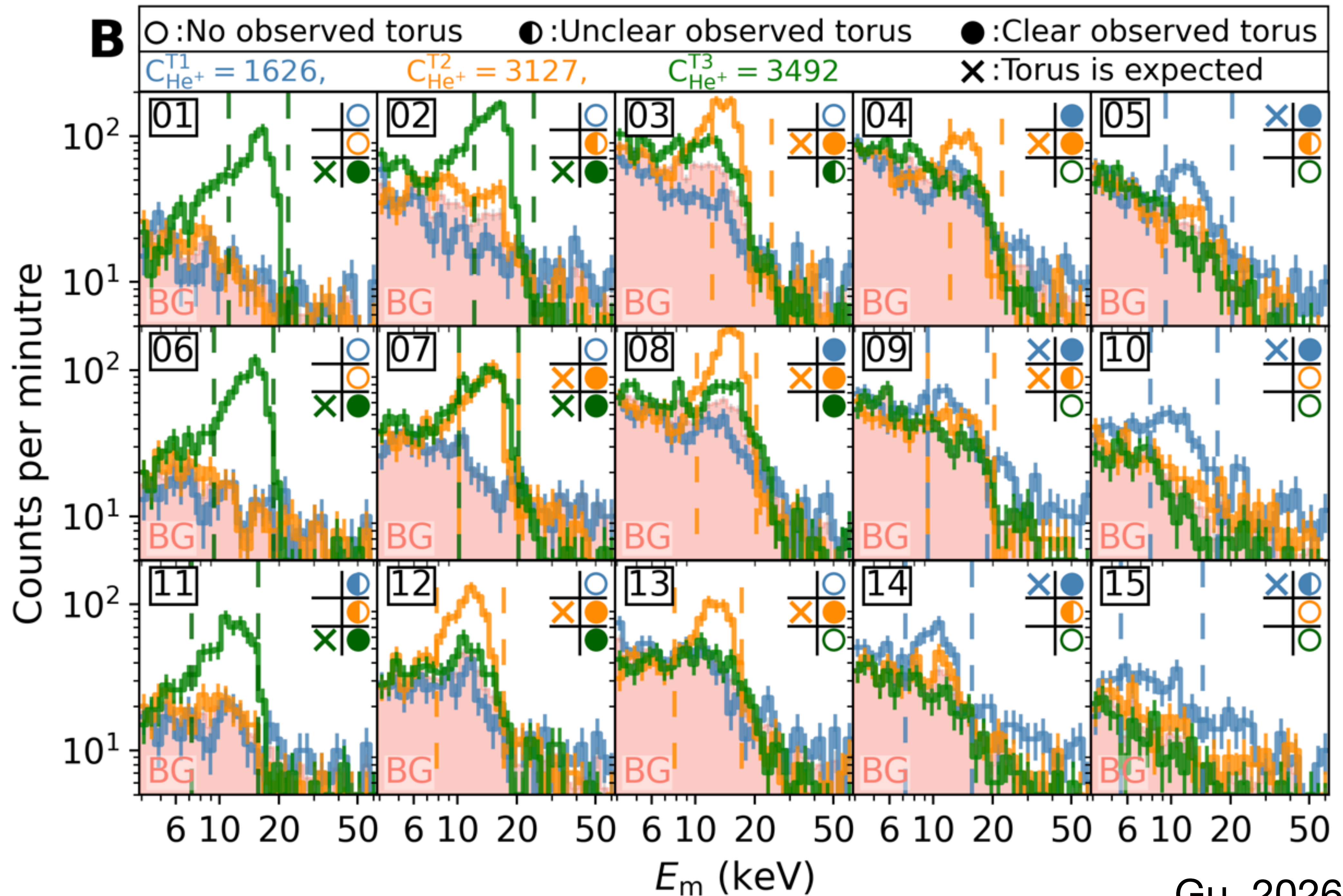


The Suprathermal Electron Proton (STEP) sensor of the Energetic Particle Detector (EPD) on board Solar Orbiter









Observations show at most weak pitch-angle scattering
for tens of hours

